



PURE ALLOY
CUSTOM



MADE IN GERMANY

21" SUPER BELL RIDE

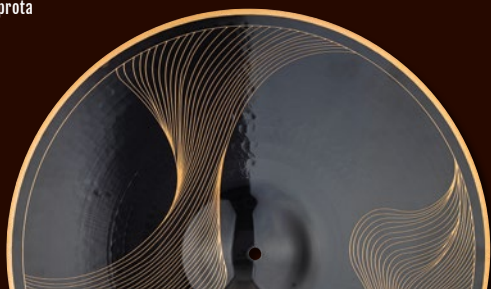
M MEINL

MEINL CYMBALS 2026

NEW FOR 2026 – PREVIEW

ARTIST DESIGN CYMBAL [p 2 – 3]

22" Arcwave – Aric Imprata



22" Ocean Tides – Anika Nilles



BYZANCE TRADITIONAL [p 6 – 7]

14" HiHat Extra Hammered

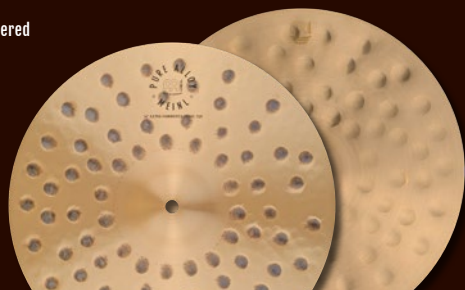


20" Ride Extra Hammered



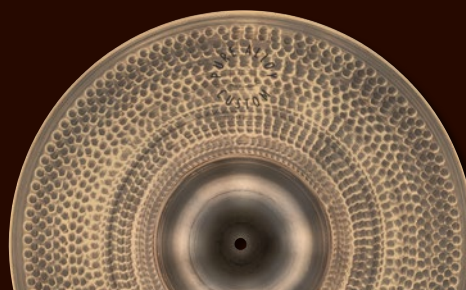
PURE ALLOY [p 24]

14" HiHat Extra Hammered



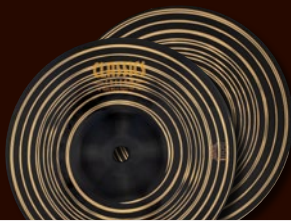
PURE ALLOY CUSTOM [p 27]

21" Ride Super Bell



CLASSICS CUSTOM DARK [p 34]

8" Micro Stack Hats



HCS [p 43]

14" HiHat Soundwave



8" MICRO STACK HATS



DRUM GEAR

Kinetic Drum Keys [p 56]



Gravity Bell [p 57]



TABLE OF CONTENTS

ARTIST DESIGN CYMBAL	02
BYZANCE FOUNDRY RESERVE	04
BYZANCE TRADITIONAL	06
BYZANCE BRILLIANT	08
BYZANCE DARK	10
BYZANCE VINTAGE	12
BYZANCE EXTRA DRY	14
BYZANCE DUAL	16
BYZANCE JAZZ	18
BYZANCE CYMBAL SETS	20
ARTIST'S CHOICE CYMBAL SETS	22
PURE ALLOY	24
PURE ALLOY CUSTOM	26
PURE ALLOY CYMBAL SETS	28
THE ARTIST CONCEPT MODELS	30
CLASSICS CUSTOM DUAL	32
CLASSICS CUSTOM DARK	34
CLASSICS CUSTOM BRILLIANT	36
CLASSICS CUSTOM EXTREME METAL	38
CLASSICS CUSTOM CYMBAL SETS	40
HCS	42
HCS CYMBAL SETS	44
MARCHING CYMBALS	46
SYMPHONIC CYMBALS	48
HCS PRACTICE CYMBALS	50
PRACTICE PADS	51
CYMBAL BAGS & CASES	52
STICK BAGS	54
HOLDER, DRUMMER GLOVES & DRUM RUGS	55
DRUM GEAR & SOUND DESIGN	56
HARDWARE	58
MUTES	59
CLEAN & PROTECT	60

ARTIST DESIGN CYMBALS

ARIC IMPROTA

Aric Improt



22" AD1

ARCWAVE

Engraved Bronze



"I wanted to illustrate something that visually depicted what it feels like to be in the middle of a real flow state.

That feeling of intense focus with effortless action. Given the unique opportunity to add a custom visual component to the kit, I wanted it to serve as a reminder of what the goal is while playing live and also act as a North Star to focus on when I'm in the middle of rehearsing something challenging."

Aric Improt



THESE limited edition, serialized cymbals feature engraved abstract artwork from Meinl artists Aric Improta and Anika Nilles, turning their favorite ride into a canvas for their creativity.



ANIKA NILLES



22" AD2

OCEAN TIDES Engraved Bronze

"Always in motion, always in rhythm.
Sometimes gentle and delicate, like a
whisper from the depths. Then wild and
roaring, with the force of stormy waves.
No matter the mood, it never
stands still."

Anika Nilles





BYZANCE

xx **FOUNDRY RESERVE** xx

MADE IN TURKEY

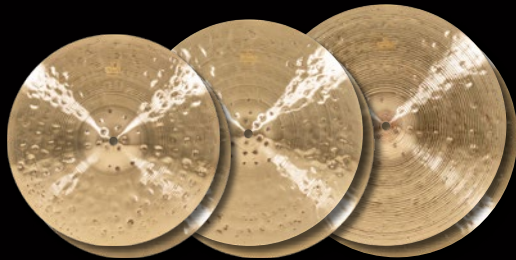
A LIMITED collection of our finest hand-made Turkish cymbals, Byzance Foundry Reserve showcases the stunning, sonically rich works of art our cymbalsmiths create. Tonality and nuance are added with extra hand-hammering, resulting in deep craters that riddle the surfaces. Coupled with wide blade lathing, these cymbals produce a clear, pronounced stick-attack note over a lush bed of even undertones.

Made in Turkey from B20 bronze, hand-hammered into shape, wide blade lathing, and traditional finish.



Each Byzance Foundry Reserve comes with a pair of Meinl Stick & Brush Standard 5A Drumsticks, a pair of 100% cotton handling gloves, a signed certificate of authenticity, and a personal letter from Mr. Reinhold Meinl.

HIHATS



14" B14FRH 15" B15FRH 16" B16FRH

CRASHES



18" B18FRC 19" B19FRC 20" B20FRC

RIDES



20" B20FRR 22" B22FRR 24" B24FRR

RIDES LIGHT



20" B20FRLR 22" B22FRLR 24" B24FRLR

FLAT RIDE



21" B21FRFR

CHINA RIDE



22" B22FRCHR

Byzance

TRADITIONAL

STARTING with hand-hammering and following with hand lathing in Turkey, the word 'traditional' accurately describes their hand forged shape and deeply rooted sound. The Traditional series features our broadest voice for Byzance, with a wide variety of sizes and weights that blend into any musical setting.

Made in Turkey from B20 bronze, hand-hammered into shape, narrow blade lathing, and traditional finish.



SPLASHES



6" B6S 8" B8S 10" B10S 12" B12S

POLYPHONIC SPLASH



10" B10POS

CHINAS



14" B14CH 16" B16CH 18" B18CH 20" B20CH 22" B22CH

TRASH CHINAS



18" B18TRCH 20" B20TRCH

HIHAT THIN



14" B14TH

HIHATS MEDIUM



10" B10MH 13" B13MH 14" B14MH 15" B15MH

HIHAT HEAVY



14" B14HH

POLYPHONIC HIHAT



15" B15POH

HIHATS EXTRA HAMMERED

NEW



14" B14EHH 15" B15EHH

CRASHES THIN



14" B14TC 15" B15TC 16" B16TC 17" B17TC 18" B18TC

CRASHES MEDIUM THIN



16" B16MTC

17" B17MTC

18" B18MTC

19" B19MTC

CRASHES MEDIUM



16" B16MC

18" B18MC

20" B20MC

22" B22MC

POLYPHONIC CRASHES



18" B18POC

19" B19POC

20" B20POC

HAMMERED CRASHES EXTRA THIN



16" B16ETHC

18" B18ETHC

19" B19ETHC

20" B20ETHC

22" B22ETHC

TRASH CRASHES



16" B16TTRC

18" B18TTRC

RIDES MEDIUM



20" B20MR

21" B21MR

22" B22MR

24" B24MR

RIDES HEAVY



20" B20HR

22" B22HR

23" B23HR

POLYPHONIC RIDES



20" B20POR

21" B21POR

22" B22POR

RIDES EXTRA HAMMERED

NEW



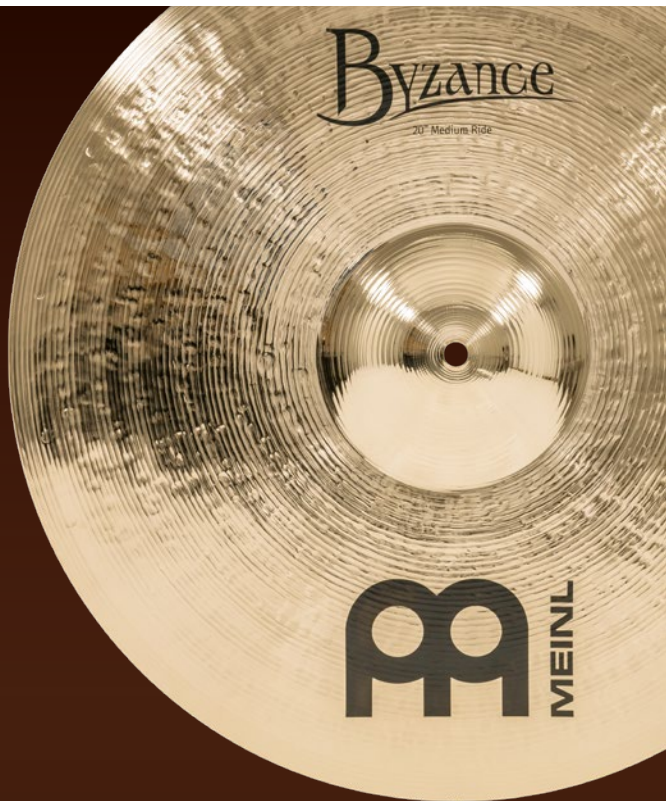
20" B20EHR

22" B22EHR

24" B24EHR

Byzance

BRILLIANT



BUILDING on the Traditional line, Byzance Brilliant cymbals are polished to create a mirrorlike finish for a stunning look on stage. The sonic result is a slightly refined sound with a smoother, lower frequency response and added shimmer. The Heavy Hammered models feature extra weight for cut and volume.

Made in Turkey from B20 bronze, hand-hammered into shape, narrow blade lathing, and brilliant finish.

SPLASHES



6" B6S-B 8" B8S-B 10" B10S-B

CHINAS



14" B14CH-B 16" B16CH-B 18" B18CH-B 20" B20CH-B

TRASH CHINA



18" B18TRCH-B

TRASH CRASHES



16" B16TRC-B 18" B18TRC-B

CRASHES THIN



14" B14TC-B 15" B15TC-B 16" B16TC-B 17" B17TC-B 18" B18TC-B

CRASHES MEDIUM THIN



16" B16MTC-B 17" B17MTC-B 18" B18MTC-B 19" B19MTC-B

CRASHES MEDIUM



16" B16MC-B 18" B18MC-B 20" B20MC-B

RIDES MEDIUM



20" B20MR-B 21" B21MR-B 22" B22MR-B

HIHAT MEDIUM



14" B14MH-B

FAST HIHATS

Thomas Lang's signature hihats

Holes around the edge of both the top and bottom cymbal allows the air inside the hihats to escape more quickly, creating a faster and stronger chick sound.



13" B13FH



14" B14FH

SERPENTS HIHATS

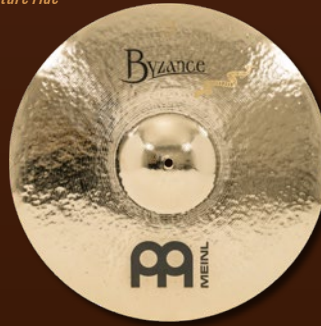
Derek Roddy's signature hihats



13" B13SH-B 14" B14SH-B

SERPENTS RIDE

Derek Roddy's signature ride



21" B21SR-B

PURE METAL RIDE

Chris Adler's signature ride



24" B24PMR-B

HEAVY HAMMERED HIHAT



14" B14HHH-B

HEAVY HAMMERED CRASHES



18" B18HHC-B 20" B20HHC-B 22" B22HHC-B

HEAVY HAMMERED CHINAS



18" B18HHCH-B 20" B20HHCH-B

HEAVY HAMMERED RIDE

The extra weight and hammering increases projection and volume while maintaining musical tonality.



22" B22HHR-B

FLEX RIDE

Thomas Lang's signature ride

Balancing perfectly between wash and ping, it never veers into excessive wash territory. Heavy weight, hand hammered in Turkey.



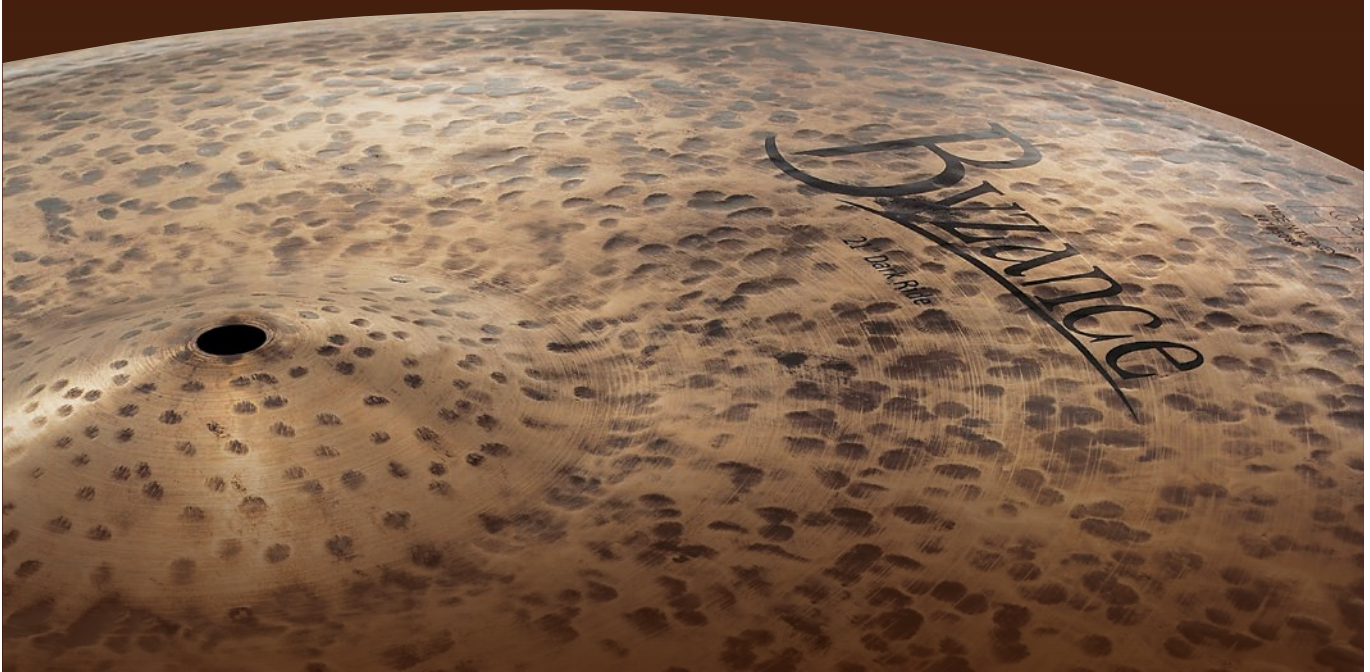
21" B21FLXR

Byzance

DARK

HAND-HAMMERED and completely unlathed, Byzance Dark cymbals immediately hit the sweet spot with crashes that open up just enough, then get out of the way. The hihats and rides provide clarity, cut and volume, along with a prominent dark tone brought out by their unique surfaces.

Made in Turkey from B20 bronze and hand-hammered into shape. The surfaces here are left unlathed creating the dark finish except for the Spectrum Hihats and Ride which are partially lathed in a spiral pattern.



SPLASHES



8" B8DAS 10" B10DAS

HIHATS



13" B13DAH 14" B14DAH 15" B15DAH

SPECTRUM HIHATS

Rodney Holmes' signature hihats



13" B13SH 14" B14SH

BIG APPLE DARK HIHAT

Small bell and thin top produce a warm, smooth tonality with dark articulation. Pair them with your favorite Big Apple ride for a highly textured expression of sound.



15" B15BADAH

CRASHES



16" B16DAC 17" B17DAC 18" B18DAC 20" B20DAC

TRASH CRASHES



18" B18DATRC 20" B20DATRC

TRASH CHINA



18" B18DATRCH

RIDES



20" B20DAR 21" B21DAR 22" B22DAR

BIG APPLE DARK RIDES

Dry articulation and crashability together with a bell that is perfectly suited for small rooms and clubs.



20" B20BADAR 22" B22BADAR 24" B24BADAR

BIG APPLE DARK TRADITION RIDE



22" B22BADTR

BIG APPLE DARK TRADITION RIDE LIGHT



22" B22BADTLR

BIG APPLE DARK FLAT RIDE

The subtle bow adds a roar and touch of sizzle to the wash for a low, breathy response.



22" B22BADFR

RAW BELL RIDES

Outstanding ride cymbal with excellent sound features and an extraordinary dark look. Untreated raw bell creates a fat, projecting sound that has a wide spectrum.



20" B20RBR 22" B22RBR

SPECTRUM RIDE

Rodney Holmes' signature ride

Extremely versatile ride due to the partial lathing, which allows the cymbal to balance a dry attack and light wash in a medium weight.



22" B22SR

DOUBLE DOWN CRASH-RIDE

Matt Halpern's signature ride

A versatile and dynamic, hand-hammered cymbal which fully functions as both a ride and crash when needed. The combination of the dark, unlathed top and lathed bottom creates a unique blend of sustain and control.



21" B21DDCR

Byzance

VINTAGE

CRRAFTED with age in mind, the Vintage voice within Byzance has unique features that simulate the aging process of a cymbal to couple relic sounds with modern appeal. The Vintage line was born from the Sand Ride, a flagship cymbal developed with Meinl Cymbals artist, Benny Greb; now, it includes a wide array of cymbals which have helped to define the Meinl sound.

Made in Turkey from B20 bronze and hand-hammered into shape. Sand models feature narrow blade lathing and a sandblasted finish, whereas Vintage Pure models are unlathed and raw.



EQUILIBRIUM HIHAT

Matt Garstka's signature hihat

Various areas sandblasted and lathed to achieve an overall balance of dryness and sustain, as well as warmth and cut. Six holes around the bottom bell increase foot chick projection.



14" B14EQH

EQUILIBRIUM CHINA

Matt Garstka's signature china



20" B20EQCH

EQUILIBRIUM RIDE

Matt Garstka's signature ride

A thicker cymbal overall. Thinned out edge to give it the desired crash-ability while maintaining a nice stick attack with pleasing overtones for jazz-like patterns that are common in progressive music.



22" B22EQR

C SQUARED RIDE

Chris Coleman's signature ride



21" B21C2R

SMACK STACK



10"|12"|14" B024VSM

SMACK STACK ADD-ON PACK



8"|16" B86VSMA

SPLASH



10" B10VS

TRASH SPLASH



10" B10TRS

CRASHES



16" B16VC

18" B18VC

20" B20VC

22" B22VC

TRASH CRASHES



16" B16TRC

18" B18TRC

20" B20TRC

PURE HIHATS



14" B14VPH

15" B15VPH

PURE CRASH



18" B18VPC

PURE TRASH CRASH



18" B18VPTRC

PURE RIDES



20" B20VPR

22" B22VPR

PURE RIDES LIGHT



20" B20VPLR

22" B22VPLR

SAND HATS

Benny Greb's signature hats



14" B14SAH

16" B16SAH

SAND CRASHES THIN

Benny Greb's signature crashes



18" B18SATC

20" B20SATC

SAND CRASH MEDIUM

Benny Greb's signature crash



18" B18SAMC

SAND CRASH-RIDE

Benny Greb's signature crash-ride



22" B22SACR

SAND RIDES

Benny Greb's signature rides



20" B20SAR

22" B22SAR

QUICK SAND RIDE

Benny Greb's signature ride

A pre-aged heavy ride inspired by legendary modified cymbal sounds of the '70s and '80s. The sound notch, sandblasting, and weight unlock clarity and control.



18" B18QSR

Byzance

EXTRA DRY



Byzance
EXTRA DRY

ALTHOUGH they appear to be raw, Byzance Extra Dry cymbals are extremely refined. Designed to be dry, fast, trashy, and low, this is one of the most intriguing voices within Byzance that attracts many drummers. The crashes, splashes, and china cymbals all explode and unleash a gritty texture from within, while the hihats and rides are crisp in definition.

Made in Turkey from B20 bronze, hand-hammered into shape, and raw finish. The bottom side of hihats, crashes, splashes and chinas are lathed, but the rides are left unlathed except for the Transition Ride, which is lathed and polished on the bottom to a brilliant finish.

SPLASHES



10" B10EDS 12" B12EDS

HIHATS MEDIUM THIN



15" B15EDMTH 16" B16EDMTH

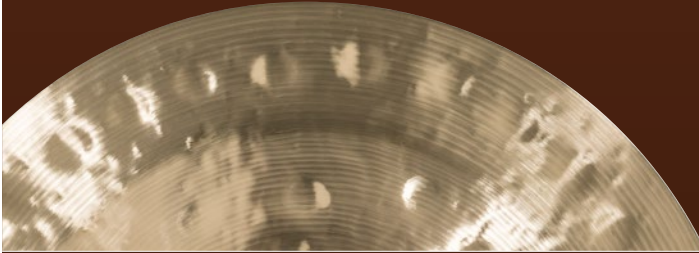
HIHATS MEDIUM



13" B13EDMH 14" B14EDMH

CHINAS

The underside of each china is fully lathed, while the top side remains unlathed, resulting in a sharper attack and warm lows.



16" B16EDCH 18" B18EDCH 20" B20EDCH

TRASH CRASH



18" B18EDTRC

CRASHES THIN



16" B16EDTC 17" B17EDTC 18" B18EDTC 19" B19EDTC 20" B20EDTC

RIDES THIN



20" B20EDTR 22" B22EDTR

RIDES MEDIUM



20" B20EDMR 22" B22EDMR

TRANSITION RIDE

Mike Johnston's signature ride

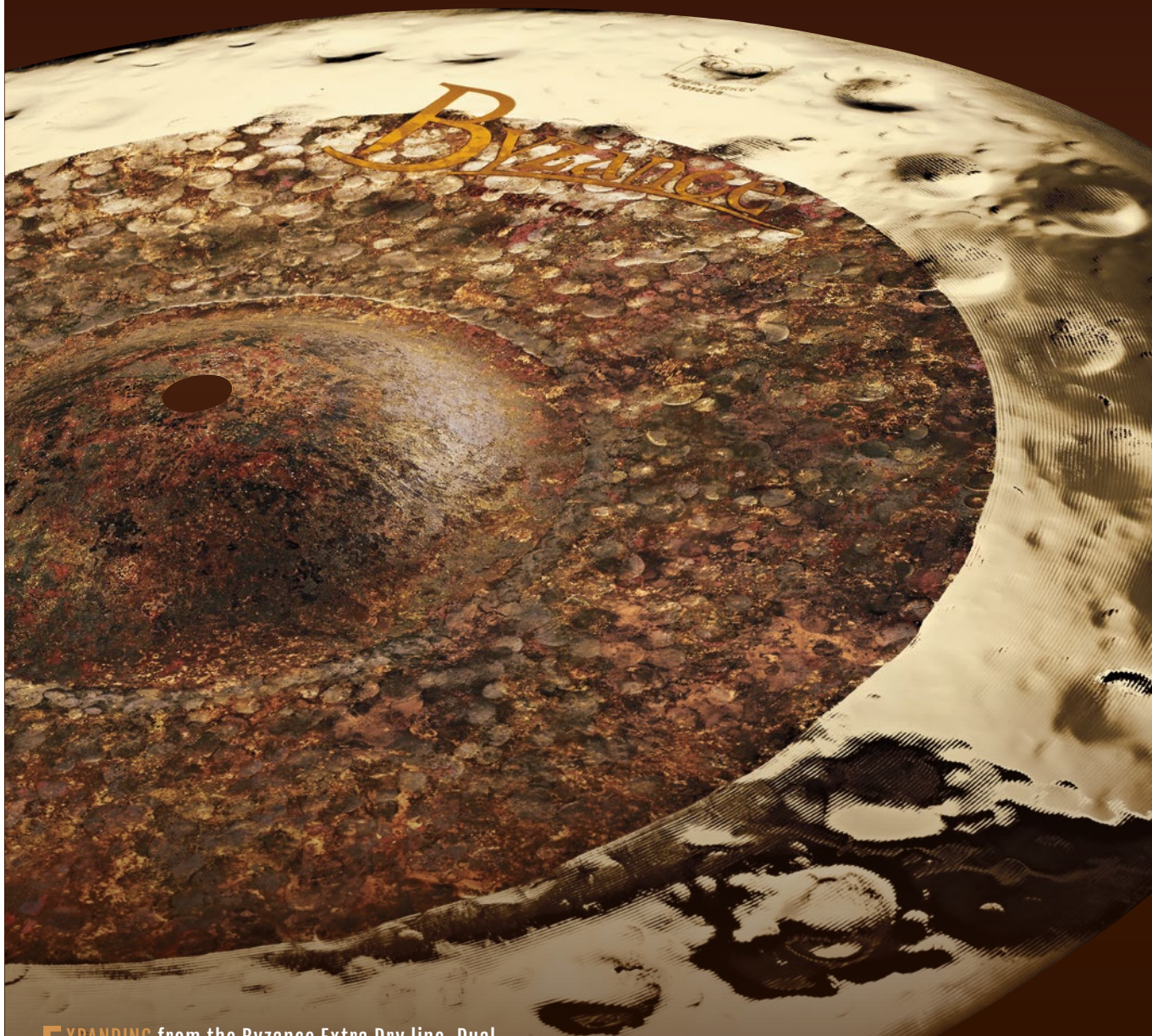
This ride has a brilliant, lathed bottom combined with an unlathed top that is slightly polished for a unique look. Opens easily for crashing, with the bell very much integrated in the overall sound.



21" B21TSR

Byzance

DUAL



EXPANDING from the Byzance Extra Dry line, Dual cymbals have quickly risen in popularity and become instantly recognizable for their unique look and sound. To start, the center is raw, bearing hand-hammered markings, while the edge is lathed and buffed to a brilliant finish. The sound is similar to the look: trashy, earthy and low at first, ending with a flash of explosive brilliance.

Made in Turkey from B20 bronze, hand-hammered into shape, raw finish in center, and narrow blade lathing with brilliant finish on edges only.

What is a Multi-Trash cymbal? This versatile cymbal makes an excellent stand-alone trash crash or extra large splash and easily stacks with another cymbal providing even more options. It can replace the top or bottom hi-hat cymbal for a trash hat effect or be combined with the top hi-hat cymbal for a crunchy tri-hat effect.

SPLASH



10" B10DUS

MULTI-TRASH



14" B14DUMUTR

CRASHES

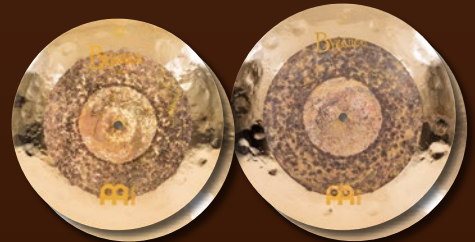


16" B16DUC

18" B18DUC

19" B19DUC

HIHATS



14" B14DUH

15" B15DUH

CHINAS



16" B16DUCH

18" B18DUCH

20" B20DUCH

TRASH CHINAS



18" B18DUTRCH

20" B20DUTRCH

CRASH-RIDES



20" B20DUCR

22" B22DUCR

TRASH CRASHES



16" B16DUTRC

18" B18DUTRC

20" B20DUTRC

Byzance

JAZZ

BYZANCE Jazz offers a deep well of expressive cymbals that draws players in. The hihats have a smooth and subtle response, and the crashes are known for a buttery feel that only develops from their hand-hammered profiles. In addition, many unique and complex ride cymbals have been created within this line to help you find your voice behind the kit.

Made in Turkey from B20 bronze, hand-hammered into shape, narrow blade lathing, and traditional finish.



SPLASH



10" B10JS

HIHATS THIN



13" B13JTH

14" B14JTH

15" B15JTH

CRASHES EXTRA THIN



16" B16JETC

17" B17JETC

18" B18JETC

CRASHES THIN



16" B16JTC

17" B17JTC

18" B18JTC

20" B20JTC

CRASHES MEDIUM THIN



16" B16JMTC

17" B17JMTC

18" B18JMTC

20" B20JMTC

RIDES THIN



20" B20JTR

22" B22JTR

RIDES MEDIUM THIN



20" B20JMTR

22" B22JMTR

CHINA RIDE



22" B22JCHR

TRADITION HIHAT



14" B14TRH

TRADITION CRASH LIGHT



18" B18TRLC

TRADITION RIDES



20" B20TRR

22" B22TRR

TRADITION RIDE LIGHT



22" B22TRLR

BIG APPLE RIDES

Sweet articulation and crashability together with a bell that is perfectly suited for smaller rooms and clubs.



20" B20JBAR

22" B22JBAR

NUANCE RIDE

*Ralph Peterson's (1962 - 2021) signature ride
Six rivets clustered near the edge create a unique, old-school sizzle effect.*



21" B21NUR

CLUB RIDES

Wolfgang Haffner's signature rides



20" B20JCR

22" B22JCR

SYMMETRY RIDE

Ralph Peterson's (1962 - 2021) signature ride



22" B22SYR

MONOPHONIC RIDE



22" B22MOR

Byzance

CYMBAL SETS

SETS to complete or expand your kit. Put hand-made Turkish cymbals at the heart of your sound. Everything you need for performance and practice.

BYZANCE TRADITIONAL

COMPLETE CYMBAL SET

14" HiHat Medium
18" Crash Medium
20" Ride Medium

BT-CS1



COMPLETE CYMBAL SET

15" Polyphonic HiHat
18" Polyphonic Crash
21" Polyphonic Ride

BT-CS2



CRASH PACK

18" Hammered Crash Extra Thin
20" Hammered Crash Extra Thin

BMAT1



CRASH PACK

18" Polyphonic Crash
20" Polyphonic Crash

BMAT3



BYZANCE BRILLIANT

COMPLETE CYMBAL SET

14" HiHat Medium
18" Crash Medium
20" Ride Medium

BB-CS1



BYZANCE EXTRA DRY

COMPLETE CYMBAL SET

14" HiHat Medium
18" Crash Thin
22" Ride Medium

BED-CS1



BYZANCE DUAL

COMPLETE CYMBAL SET

14" HiHat
18" Crash
20" Crash-Ride
BDU-CS1



COMPLETE CYMBAL SET

15" HiHat
18" Crash
22" Crash-Ride
BDU-CS2



CRASH PACK

16" Crash
18" Crash
BMAT4



BYZANCE MIXED SETS

CRASH PACK

18" Crash, Dual
20" Hammered Crash Extra Thin
BMIX1



CRASH PACK

16" Crash, Dual
18" Hammered Crash Extra Thin
BMIX2



CRASH PACK

18" Crash Thin, Extra Dry
20" Hammered Crash Extra Thin
BMIX6



BYZANCE ASSORTED CYMBAL SET

ASSORTED CYMBAL SET

15" HiHat, Dual
18" Crash, Dual
20" Hammered Crash Extra Thin
21" Polyphonic Ride
B15182021



ARTIST'S CHOICE CYMBAL SETS

FULL sets selected by Meinl Cymbal artists that fit their style but allow you to express yourself. Everything you need for performance and practice.

ARTIST'S CHOICE CYMBAL SET: MATT HALPERN

- 14" Byzance Hihat Medium, Traditional
- 18" Byzance Hammered Crash Extra Thin, Traditional
- 20" Byzance Hammered Crash Extra Thin, Traditional
- 21" Byzance Double Down Crash-Ride, Dark

A-CS2



ARTIST'S CHOICE CYMBAL SET: BENNY GREB

- 14" Byzance Sand Hat, Vintage
- 18" Byzance Sand Crash Thin, Vintage
- 20" Byzance Sand Ride, Vintage

BV-141820SA



ARTIST'S CHOICE CYMBAL SET: BENNY GREB

- 14" Byzance Sand Hat, Vintage
- 18" Byzance Sand Crash Thin, Vintage
- 20" Byzance Sand Ride, Vintage
- 22" Byzance Sand Crash-Ride, Vintage

A-CS3



ARTIST'S CHOICE CYMBAL SET: MATT GARSTKA

- 14" Byzance Equilibrium Hihat, Vintage
- 18" Byzance Crash Extra Thin, Jazz
- 20" Byzance Equilibrium China, Vintage
- 22" Byzance Equilibrium Ride, Vintage

A-CS4



ARTIST'S CHOICE CYMBAL SET: CHRIS COLEMAN

- 12" Pure Alloy Trash China
- 14" Byzance Pure Hihat, Vintage
- 19" Byzance Crash Medium Thin, Brilliant
- 21" Byzance C Squared Ride, Vintage

A-CS5



ARTIST'S CHOICE CYMBAL SET: MIKE JOHNSTON

- 15" Byzance Foundry Reserve Hihat
- 20" Byzance Hammered Crash Extra Thin, Traditional
- 21" Byzance Transition Ride, Extra Dry

A-CS6



ARTIST'S CHOICE CYMBAL SET: THOMAS LANG

- 14" Byzance Fast Hihat, Brilliant
- 18" Byzance Polyphonic Crash, Traditional
- 21" Byzance Flex Ride, Brilliant

A-CS7



PURE ALLOY



MADE IN GERMANY

MEINL



PURE ALLOY cymbals sonically bridge the gap between the darker and brighter cymbals in Meinl's lineup, filling the middle ground. Their shimmering, smooth sounds cut with agility and have a full range of tonality with medium sustain making them perfect for all dynamic levels. The crashes and rides have a perfect mix of effortless strength and a balanced wash, while the hihats carry a clean, refined definition.

Made in Germany from Pure Alloy bronze and hammered into shape. The traditional models feature pinpoint lathing creating the traditional finish.

SPLASHES

Fast response with a crisp attack and bright tonality. Great for accents or counterbalancing big crashes.



8" PA8S 10" PA10S 12" PA12S

SPLASH EXTRA HAMMERED

Extra-deep hammering allows it to accent with punchy and warm tone. Clean attack, fast decay.



10" PA10EHS

CHINA



18" PA18CH

CHINA EXTRA HAMMERED



18" PA18EHCH

TRASH CHINAS

Creating a fast attack.



12" PA12TRCH 18" PA18TRCH

HIHATS MEDIUM



14" PA14MH 15" PA15MH

HIHATS EXTRA HAMMERED

NEW



14" PA14EHH 15" PA15EHH

HIHATS SOUNDWAVE



14" PA14SWH 15" PA15SWH

QUICK SAND HAT

Benny Greb's signature hat

Pre-aged hihat with definition and tonal depth – inspired by iconic recordings of the '70s and '80s. The bottom sound notch prevents airlock while boosting clarity and control.



14" PA14QSH

CRASHES THIN

Thin crashes open up easily with a bright punch and warm wash, then decay quickly for a short sustain.



16" PA16TC

18" PA18TC

20" PA20TC

CRASHES MEDIUM



16" PA16MC

17" PA17MC

18" PA18MC

19" PA19MC

20" PA20MC

22" PA22MC

CRASHES EXTRA HAMMERED

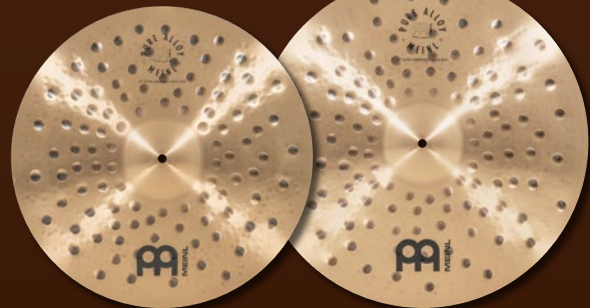


16" PA16EHC

18" PA18EHC

20" PA20EHC

CRASH-RIDES EXTRA HAMMERED

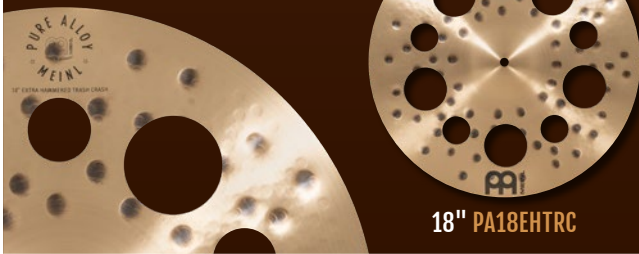


20" PA20EHC

22" PA22EHC

TRASH CRASH EXTRA HAMMERED

Extra-deep hammering allows it to accent with punchy and warm tone. Hole cut-outs boost trashiness and dry the sound.



18" PA18EHC

RIDES THIN



20" PA20TR

22" PA22TR

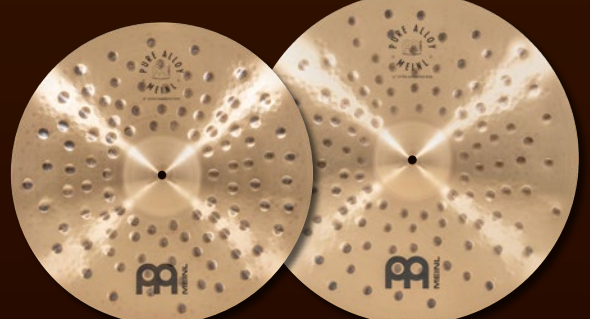
RIDES MEDIUM



20" PA20MR

22" PA22MR

RIDES EXTRA HAMMERED

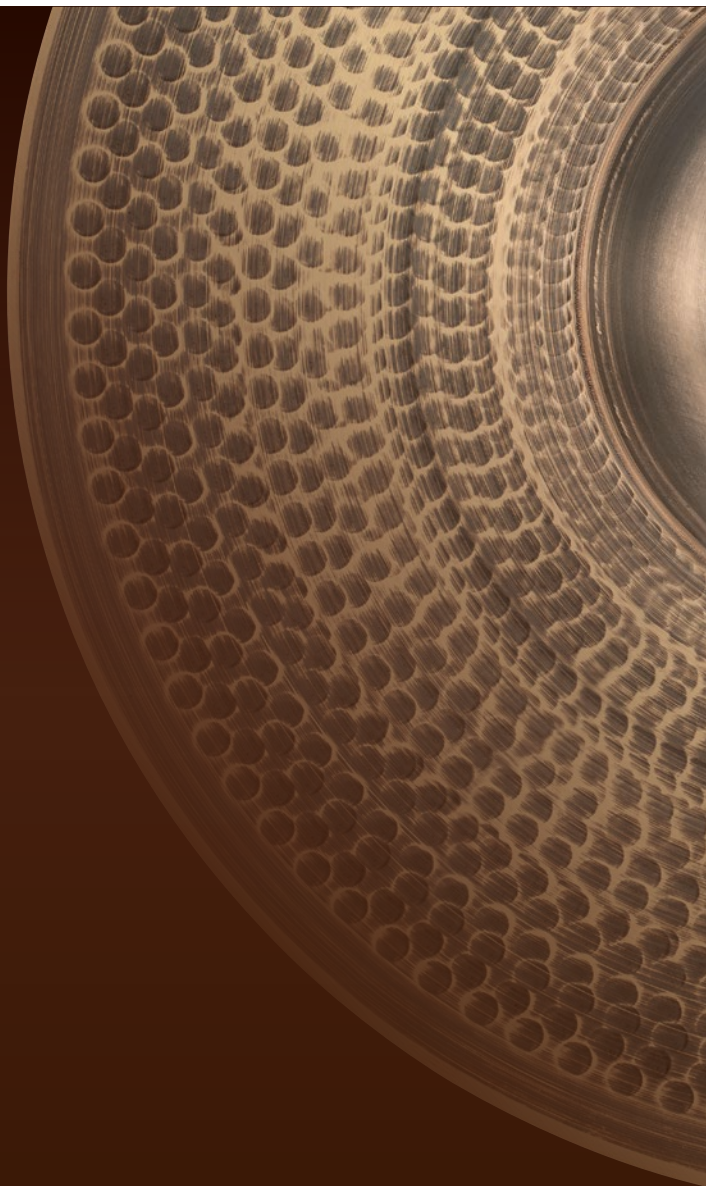


20" PA20EHR

22" PA22EHR

PURE ALLOY

 MEINL
 MADE IN GERMANY
 CUSTOM



PURE ALLOY CUSTOM is a unique series that offers smooth tonality, a great feel under the stick, and a distinctive look on any drum kit. They produce a slightly softer attack with a warmer body and faster decay, while maintaining the bright shimmer and sustain that Pure Alloy is known for.

Made in Germany from Pure Alloy bronze and hammered into shape. To make these cymbals visually stand out, we applied a finish on top called custom smoked-bronze and polished the bottom to a brilliant finish.

SPLASHES



8" PAC8S 10" PAC10S 12" PAC12S

TRASH SPLASH



12" PAC12TRS

TRASH STACK



12" PAC-12STK

HIHATS MEDIUM THIN



14" PAC14MTH 15" PAC15MTH

HAMMERED HIHAT EXTRA THIN



15" PAC15ETHH

TRASH CHINAS



12" PAC12TRCH 18" PAC18TRCH

RIDES MEDIUM THIN

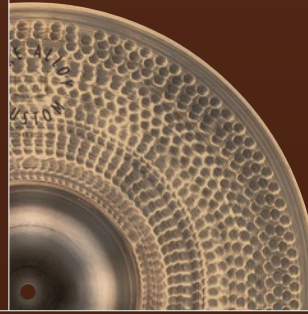


20" PAC20MTR

22" PAC22MTR

RIDE SUPER BELL

Extra-large bell and heavy weight deliver piercing volume and bright tone that cut through dense, loud stage mixes, while staying expressive.



NEW

21" PAC21SBR

TRASH CRASHES

The Pure Alloy Custom Trash Crash features a medium thin weight in combination with different sized cut-outs. Brash crash sound with short sustain.



16" PAC16TRC

18" PAC18TRC

20" PAC20TRC

HAMMERED CRASHES EXTRA THIN

Producing a velvety crash under the stick due to the thinner weight, this cymbal speaks easily from whisper to roar. The additional hammering works in dark tonality and warmth.



16" PAC16ETHC

18" PAC18ETHC

20" PAC20ETHC

CRASHES MEDIUM THIN



16" PAC16MTC

17" PAC17MTC

18" PAC18MTC

19" PAC19MTC

20" PAC20MTC

CRASHES MEDIUM



16" PAC16MC

18" PAC18MC

CRASHES MEDIUM HEAVY



18" PAC18MHC

20" PAC20MHC

PURE ALLOY



MEINL
MADE IN GERMANY

CYMBAL SETS



THE most widely used cymbal types in matched setups. Complete or expand your kit with everything you need for performance and practice.

PURE ALLOY

COMPLETE CYMBAL SET

14" HiHat Medium
16" Crash Medium
20" Ride Medium

PA141620



COMPLETE CYMBAL SET

15" HiHat Extra Hammered
18" Crash Extra Hammered
22" Ride Extra Hammered

PA-CS1



COMPLETE CYMBAL SET

14" HiHat Medium
16" Crash Thin
20" Ride Thin

PA-CS2



PURE ALLOY CUSTOM

COMPLETE CYMBAL SET

- 14" HiHat Medium Thin
- 18" Crash Medium Thin
- 20" Ride Medium Thin

PAC141820



EXPANDED CYMBAL SET

- 14" HiHat Medium Thin
- 16" Crash Medium Thin
- 18" Crash Medium Thin
- 20" Ride Medium Thin

PAC14161820



COMPLETE CYMBAL SET

- 14" HiHat Medium Thin
- 18" Hammered Crash Extra Thin
- 20" Ride Medium Thin

PAC-CS1



EXPANDED CYMBAL SET

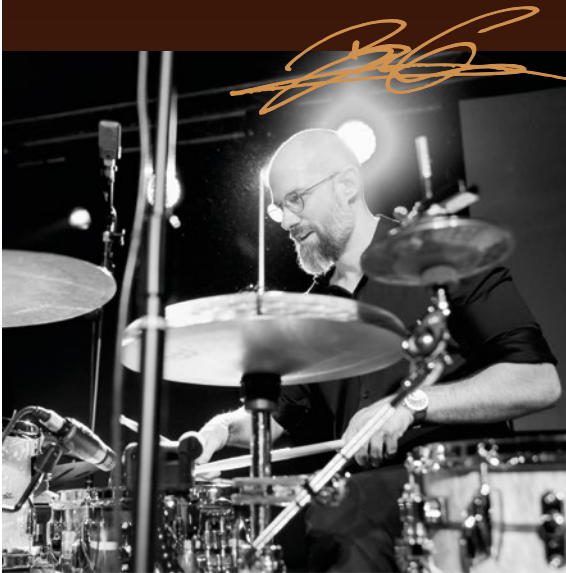
- 15" Hammered HiHat Extra Thin
- 16" Hammered Crash Extra Thin
- 18" Hammered Crash Extra Thin
- 20" Ride Medium Thin

PAC-CS2



THE ARTIST CONCEPT MODELS

WORKING closely with some of the most creative drummers on the planet, Artist Concept Models were born from collaborations with our Meinl Cymbals artists to develop new and unique sounds. Each process involved combining different cymbals to create effect stacks or auxiliary hihat which best met that artist's vision. In some cases, multiple series or alloys were used to find the perfect result. Read on to find out what the artists themselves have to say about their individual concept model.



BENNY GREB CRASHER HATS

"I wanted something that was super short, dry, clear and high frequency but still very dynamic that could fulfill a whispering shaker-like role in the music. Tough to get! So we had to create something completely unique. Four separate cymbals sandwiched together. They have different shoulders so they collapse against each other at every hit. The result is incredible. A very unique sound that blends beautifully with ghost notes and other subdivisions, but can also make a very percussive statement. They are part of my sound. I absolutely love them!"



6"/6" AC-6CRASHER 8"/8" AC-CRASHER
[With X-Hat Auxiliary Hihat Arm]

MATT GARSTKA TEMPORAL STACKS

"I mainly use the Temporal Stacks within complex groove and chop patterns. Their dry, trashy, staccato sound allows them to get in and out of tight spaces quickly. The stacks can absolutely be used as timekeepers, but the fun lies in orchestrating these stacks into rhythmic patterns which will for sure open up a lot of creativity."

FAT STACK

"This stack cuts through the mix with a crunchy bite. With no ring the sustain is dry and pleasing to the ear. Its trashy quality is maintained through a wide variety of tensions, with my personal favorite being a light tension that gives its Fat Stack namesake."



8"/10" AC-TE1 10"/10" AC-TE2

18"/16" AC-FAT

Matt Garstka

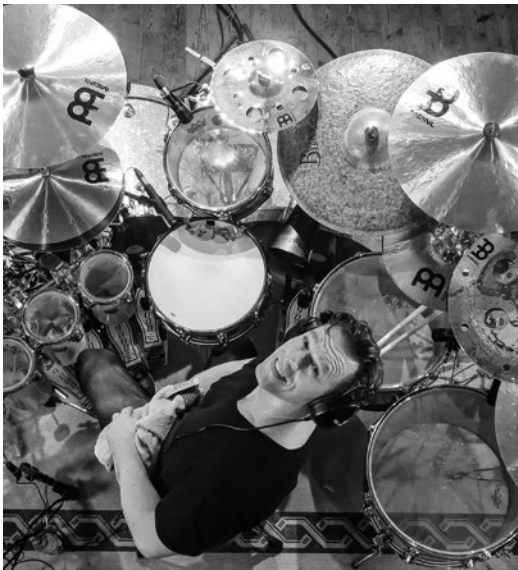


ANIKA NILLES DEEP HATS

"What I really like about my Deep Hats is that they have so many musical applications. They fill the sonic gap between my main hihats, and my crashes. I play them half open as a time keeper, very similar to crash-riding, however the Deep Hats sound softer and more articulated. That is something I prefer."



18"/18" AC-DEEP [With X-Hat Auxiliary Hihat Arm]



**THOMAS LANG
SUPER STACK**

"Its fierceness cuts through any wall of sound and allows you to slice through even the most crowded soundscape. When played softly at the edge, it produces a wide and washy sizzle, perfect for accents and punctuations at a more moderate volume. When played with the stick tip at the shoulder, its short and piercing sound is reminiscent of a trashy hihat. The Super Stack is super loud, super fast, and super short. It allows the drummer to override and supersede even the most dense frequency chaos and make a clear and concise percussive statement in every musical situation. This is the most versatile stack combination you'll find."



18"/18" AC-SUPER

FILTER CHINA

"A fast, sharp and almost sinister sound. Quieter than most chinas, it has a short sustain due to the waved edge."

Thomas Lang



14" GX-14FCH

MATT HALPERN DOUBLE DOWN STACK

"To me they are the culmination of the best sounds I've been able to produce and utilize in both live and studio settings. You can configure the stack so it cuts through the loudest of music in the loudest of venues, or you can change it up and use it in the most dynamic of musical situations."

Matt Halpern



17"/18" AC-DOUBLEDOWN



**LUKE HOLLAND
BABY STACK**

"My goal with the Baby Stack was to create a combo that I could use in any setting; from metal to electronic to hip-hop. The beauty of the Baby Stack is its ability to cut through tremendously or sit back and be casually articulate. It's incredibly dynamic, and that's why I will always use it in every show, recording, or video I do."

Luke Holland



10"/12" AC-BABY

BULLET STACK

"Quick as a bullet, hurts like one too. Perfect for when you need to cut and make your point. What I love about the Bullet Stack is that no matter how quickly you need it to be present and then disappear, it always delivers."



12"/16" AC-BULLET

CLASSICS

— CUSTOM —

DUAL SERIES

THERE is more to the Classics Custom Dual series than you may think. These cymbals are almost hypnotic, and feel at home across many styles. The lathed and polished edges have a flexible feel and create a fast response when crashed. Additionally, the dark center powers these cymbals to produce a quick punch with a complex character. The resulting sound is a harmonious blend of warmth and explosive response that will feel at home both in the studio and on stage.

The full assortment of hihats, crashes, rides, plus a splash and china is rounded out with a trash splash, trash crashes, and a trash china to offer drummers all of the necessary voicings for a wide range of diverse musical styles. With an appearance as striking as their complex sound, Classics Custom Dual cymbals will add another layer of sophistication to your setup.

Made in Germany from B12 bronze alloy, lathe formed profile, extra hammering, raw finish in center, wide blade and pinpoint lathing with brilliant finish on edges only.

SPLASH



10" CC10DUS

TRASH SPLASH



12" CC12DUTRS

HIHATS



14" CC14DUH

15" CC15DUH



More about that finish: Having a dark center along with deep over-hammering gives the cymbals the ability to punch through with a dark and bold character. Lathed and highly polished edges soften the feel and create a flash of clean, high frequencies to round out the sound.

CRASHES



16" CC16DUC

18" CC18DUC

19" CC19DUC

20" CC20DUC

TRASH CRASHES



16" CC16DUTRC

18" CC18DUTRC

CHINA



18" CC18DUCH

TRASH CHINA



16" CC16DUTRCH

RIDES



20" CC20DUR

22" CC22DUR

CLASSICS

— CUSTOM —

DARK SERIES

AGGRESSIVE and loud, but with a dark and warm tone, Classic Custom Dark cymbals are like nothing you have seen or heard before. Here, the cutting nature of Classics Custom is met with a shadowy and intense wash that envelops your playing with a complex, dark tone. The wide assortment of models and cymbal types are sure to help you find your sound whether you are adding on or building a complete set.

Made in Germany from B12 bronze alloy, lathe formed profile, extra hammering, wide blade lathing, and dark finish.

*Why do trash crashes have holes?
By removing material from a cymbal, sound waves travel quickly and escape from the cymbal, creating the fast decay these cymbals are known for. The size, shape, and placement of the holes will also affect how trashy or dark the end result will sound.*

SPLASHES



8" CC8DAS 10" CC10DAS 12" CC12DAS

TRASH SPLASHES



10" CC10DATRS 12" CC12DATRS

MICRO STACK HATS

Heavy bottom, light top, and small size create a high-pitched tone—ideal for quick accents or adding character to time-keeping.



8" CC8DAH

NEW

HIHATS



13" CC13DAH 14" CC14DAH 15" CC15DAH

HIHAT HEAVY



14" CC14HDAH

CHINA



18" CC18DACH

CHINA HEAVY



18" CC18HDACH

TRASH CHINAS



16" CC16DATRCH 18" CC18DATRCH

CRASHES



16" CC16DAC

17" CC17DAC

18" CC18DAC

19" CC19DAC

20" CC20DAC

21" CC21DAC

CRASHES THIN



16" CC16TDAC

18" CC18TDAC

CRASHES HEAVY



16" CC16HDAC

18" CC18HDAC

TRASH CRASHES



14" CC14DATRC

16" CC16DATRC

18" CC18DATRC

TRASH STACKS



12" CC-12DASTK

16" CC-16DASTK

RIDES



20" CC20DAR

22" CC22DAR

RIDE HEAVY



20" CC20HDAR

BIG BELL RIDE HEAVY



18" CC18HBB DAR

CRASH-RIDE



22" CC22DACR

CLASSICS — CUSTOM —

BRILLIANT SERIES

CLASSICS
— CUSTOM —
20" Medium Ride

BRIGHT and focused with a shimmering response, Classics Custom is best suited for drummers who want cymbals that speak with a clear voice. The mirrorlike finish looks incredible under stage lights and adds brilliance to the sound. With so many models to choose from, the extensive lineup provides plenty of options that will allow you to find the missing cymbal you need or build the foundation for a whole new setup.

Made in Germany from B12 bronze alloy, lathe formed profile, mirror smooth surface, and brilliant finish.



The brilliant finish on all Classics Custom cymbals adds a shimmer and brilliance both to the sound as well as the look.

BELL



8" CC8B-B

SPLASHES



8" CC8S-B 10" CC10S-B 12" CC12S-B

TRASH SPLASH



12" CC12TRS-B

HIHAT POWERFUL



14" CC14PH-B

HIHATS MEDIUM



14" CC14MH-B 15" CC15MH-B

CHINAS



16" CC16CH-B 18" CC18CH-B

TRASH CHINAS



16" CC16TRCH-B 18" CC18TRCH-B

CRASHES THIN



16" CC16TC-B 18" CC18TC-B

CRASHES POWERFUL



16" CC16PC-B 18" CC18PC-B

CRASHES MEDIUM



14" CC14MC-B 15" CC15MC-B 16" CC16MC-B 17" CC17MC-B 18" CC18MC-B

TRASH CRASHES



16" CC16TRC-B 18" CC18TRC-B

TRASH STACKS



12" CC-12STK 16" CC-16STK

RIDES POWERFUL



20" CC20PR-B 22" CC22PR-B

GHOST RIDE

Brann Dailor's signature ride
Unique look and sound, glassy ping,
warm shimmer, sparkling decay.
Raw black bell for cutting clarity.



21" CC21GR

RIDE MEDIUM



20" CC20MR-B

CLASSICS CUSTOM

EXTREME METAL SERIES

MADE for drummers who need a tough cymbal that will endure a punishing set night after night while delivering plenty of volume and cut. Exactly as their name suggests, they are an extreme version of Classics Custom. They have the same brightness, clarity, and shimmer, but with a double-shot of punch and volume for more power and precision to climb above the roar of distortion-charged amps.

Made in Germany from B12 bronze alloy, lathe formed profile, mirror smooth surface, and brilliant finish.



Ever wonder why these cymbals are called 'Extreme Metal'? It's due to the extreme nature of volume and clarity produced by their heavier weights across all models in addition to specific features, like the extra-large megabells on ride cymbals. An often overlooked feature is the additional deep hammering on each cymbal. When we developed this line, we did not want to just create louder cymbals. Instead, our goal was to create louder cymbals that were still musical. By adding the extra hammer blows, we were able to darken the tonality enough to counteract the heavier weight's increased brightness. The result is a line of full-sounding cymbals with power, volume, and clarity.

SPLASH



10" CC10EMS-B

CHINAS



16" CC16EMCH-B

18" CC18EMCH-B

HIHAT



14" CC14EMH-B

CRASHES



16" CC16EMC-B

17" CC17EMC-B

18" CC18EMC-B

19" CC19EMC-B

BIG BELL RIDE

The smaller diameter makes it easier to fit into a multi-cymbal set, but the huge bell is still extremely cutting and powerful.



18" CC18EMBBR-B

RIDE



20" CC20EMR-B

CLASSICS

— CUSTOM —

CYMBAL SETS

COMplete or expand your sound with Classics Custom. All the must-have cymbal types in special tailored configurations. Everything you need for performance and practice.

CLASSICS CUSTOM DUAL

COMPLETE CYMBAL SET

14" HiHat
16" Crash
20" Ride

CCDU141620



COMPLETE CYMBAL SET

15" HiHat
18" Crash
22" Ride

CCDU-CS1



EXPANDED CYMBAL SET

14" HiHat
16" Trash Crash
18" Crash
20" Ride

CCDU4680



CLASSICS CUSTOM DARK

COMPLETE CYMBAL SET

14" HiHat
16" Crash
20" Ride

CCD141620



EXPANDED CYMBAL SET

14" HiHat
16" Crash
18" China
20" Ride

CCD-CS1



CLASSICS CUSTOM DARK

EXPANDED CYMBAL SET

- 10" Splash
- 14" HiHat
- 16" Crash
- 18" Crash
- 16" Trash Crash
- 18" China
- 20" Ride

CCD-CS2



EFFECTS PACK

- 10" Splash
- 18" China

CCD-CS3



EXPANDED CYMBAL SET

- 14" HiHat Heavy
- 16" Crash Heavy
- 18" Crash Heavy
- 20" Ride Heavy

CCD-CS4



CLASSICS CUSTOM BRILLIANT

COMPLETE CYMBAL SET

- 14" HiHat Medium
- 16" Crash Medium
- 20" Ride Medium

CC141620



COMPLETE CYMBAL SET

- 14" HiHat Medium
- 18" Crash Medium
- 20" Ride Medium

CC-CS1



CLASSICS CUSTOM EXTREME METAL

COMPLETE CYMBAL SET

- 14" HiHat
- 18" Crash
- 20" Ride

CC-EM480



EXPANDED CYMBAL SET

- 14" HiHat
- 16" Crash
- 18" Crash
- 18" China
- 20" Ride

CCEM-CS1



HCS
MADE IN GERMANY

HCS
MADE IN GERMANY

20" Crash-Ride

MEINL

OUR HCS line offers drummers of all ages and levels the highest quality cymbals at an incredible value. Meinl is proud to offer the widest variety of cymbal models and types in this price range, making this a great place to start your cymbal collection or add to it.

Made in Germany from MS63 brass alloy, lathe formed profile, wide blade lathing, and traditional finish.

BELL



8" HCS8B

SPLASHES



8" HCS8S



10" HCS10S



12" HCS12S

MICRO STACK HATS

Heavy bottom, light top, and small size create a high-pitched tone—ideal for quick accents or adding character to time-keeping.

NEW



8" HCS8H

TRASH CRASHES



16" HCS16TRC

18" HCS18TRC

TRASH STACKS

HCS Trash Stacks provide a cutting attack and are used by drummers of all levels.



12" HCS12TRS

14" HCS14TRS

16" HCS16TRS

SMACK STACKS



10"/12"/14"
HCS024SM



8"/10"/12"/14"/16"
HCS80246SM

CHINAS



12" HCS12CH

14" HCS14CH

16" HCS16CH

18" HCS18CH

TRASH CHINAS



16" HCS16TRCH

18" HCS18TRCH

HIHATS



13" HCS13H

14" HCS14H

15" HCS15H

HIHAT SOUNDWAVE

NEW



14" HCS14SWH

CRASHES



14" HCS14C

16" HCS16C

18" HCS18C

CRASH-RIDES



18" HCS18CR

20" HCS20CR

RIDES



20" HCS20R

22" HCS22R

BIG BELL RIDE



18" HCS18BBR



CYMBAL SETS

All the must-have cymbal types in smart setups for any need. For learning and playing with starter to super-sized sets.

BASIC CYMBAL SET

14" HiHat
18" Crash-Ride
HCS1418



COMPLETE CYMBAL SET

14" HiHat
16" Crash
20" Ride
HCS141620



EXPANDED CYMBAL SET

14" HiHat
16" Trash-Crash
18" Crash
20" Ride
HCS14161820





STARTER SET

8" Splash
13" HiHat
HCS-CS1



EXPANDED CYMBAL SET

10" Splash
14" HiHat
16" Crash
18" Crash
20" Ride
HCS-CS2

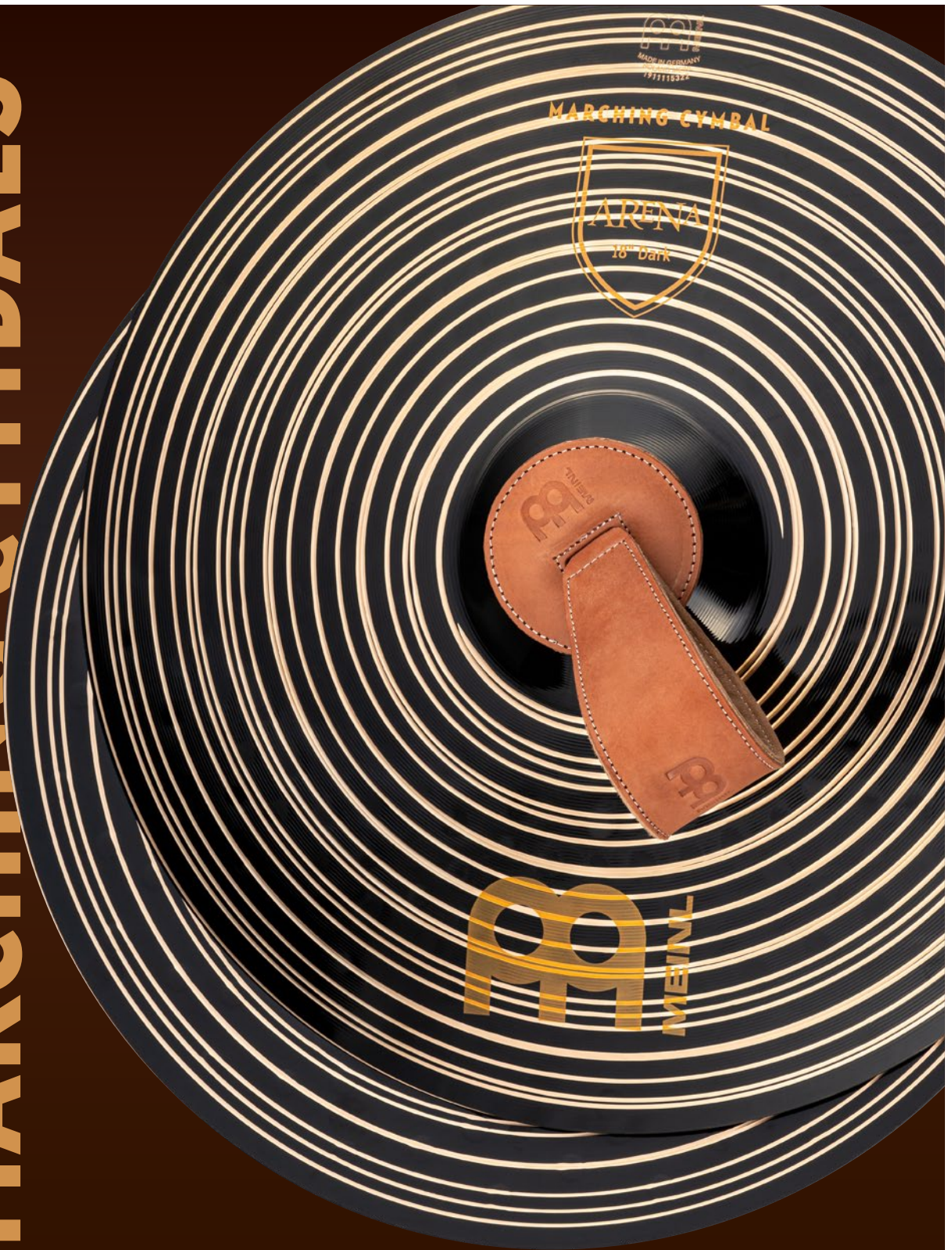


SUPER CYMBAL SET

10" Splash
14" HiHat
16" Crash
18" Crash
16" China
20" Ride
HCS-SCS



MARCHING CYMBALS



MADE in Germany, Meinl's Marching Cymbals cover all aspects of indoor and outdoor drumline and marching band needs ranging from professional groups to schools. Each pair of cymbals has been tonally matched and includes a set of straps. In addition, all models in the professional range feature a brilliant finish to provide a superior visual performance. Various sizes and alloys available.

Made in Germany from assorted alloys, hammered and lathe formed profiles, various lathing and finishes, with straps included.

PROFESSIONAL RANGE B12

Professional Leather Straps included



16" MA-B12-16M

18" MA-B12-18M

PROFESSIONAL RANGE B10

Professional Leather Straps included



16" MA-B10-16M

PROFESSIONAL RANGE ARENA

Professional Leather Straps included



16" MA-AR-16

18" MA-AR-18

PROFESSIONAL RANGE ARENA DARK

Professional Leather Straps included



16" MA-AR-16DA

18" MA-AR-18DA

PROFESSIONAL LEATHER STRAPS

Made from the finest leather for the ultimate in comfort. The strap has a soft surface and the pad provides excellent protection for the hands.



BR5 [pair]

STUDENT RANGE BRONZE

Standard Leather Straps included



14" MA-BZ-14M

16" MA-BZ-16M

18" MA-BZ-18M

STANDARD LEATHER STRAPS

Standard cymbal strap made from leather. It comes with a pad, which provides excellent protection for the hands.



BR3 [pair]

STUDENT RANGE BRASS

Standard Leather Straps included



13" MA-BR-13M

14" MA-BR-14M

16" MA-BR-16M

18" MA-BR-18M

MARCHING LEATHER STRAPS

Specially designed marching leather strap made out of the finest thin leather with extra length in order to easily hold the cymbals in the traditional marching grip.



BR2 [pair]



Symphonic Cymbals

HANDCRAFTED MASTERPIECES

MEINL Symphonic cymbals are cast from B20 bronze alloy, hand-hammered, and lathed in the same Turkish foundry as the Byzance line. We offer five weights of hand crashes and a wide range of suspended cymbals in multiple sizes enabling you to cover all cymbal applications and requirements needed in symphonic and orchestral music.

Made in Turkey from B20 bronze alloy, hand-hammered into shape, narrow blade lathing, and traditional finish, with straps included.

TUNING FORK 440 HZ

The Tuning Fork is made in Germany and tuned precisely to the Standard Pitch of 440 Hz. The tuning fork features an ergonomically shaped grip for comfort.



TF-440

SYMPHONIC CYMBALS THIN

Leather Handles included



16" SY-16T

18" SY-18T

20" SY-20T

22" SY-22T

SYMPHONIC CYMBALS MEDIUM

Leather Handles included



16" SY-16M

18" SY-18M

20" SY-20M

22" SY-22M

SYMPHONIC CYMBAL MEDIUM HEAVY

Leather Handles included



19" SY-19MH

SYMPHONIC CYMBALS HEAVY

Leather Handles included



16" SY-16H

18" SY-18H

20" SY-20H

22" SY-22H

SYMPHONIC CYMBALS EXTRA HEAVY

Leather Handles included



20" SY-20EH

22" SY-22EH

SUSPENDED CYMBAL STAND

The Suspended Cymbal Stand is specifically engineered to support the cymbal as it swings freely in all directions, in order to produce its maximum sound. Designed to hold cymbals up to 24" in diameter. A cymbal stacker can be attached on top of the gooseneck for an additional cymbal.



TMSCS

HAND CYMBAL STAND

Strong and solid design with three double-braced legs. The two padded cymbal cradles are easily adjustable by a standard drum key. A shelf is added between the two cymbal cradles for different drum accessories.



TMHCS

LEATHER HANDLES

Made from the finest leather to satisfy the highest demands. Perfect grabbing a hold of quickly and recommended for orchestral applications.



BR1 [pair]

SYMPHONIC SUSPENDED CYMBALS



14" SY-14SUS

16" SY-16SUS

17" SY-17SUS

18" SY-18SUS

20" SY-20SUS

22" SY-22SUS

HCS



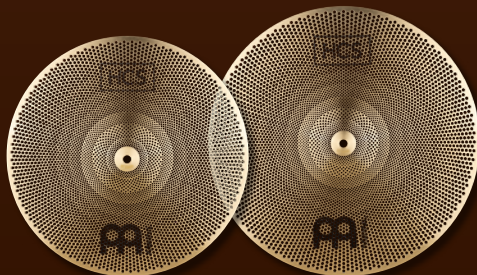
OUR HCS PRACTICE CYMBALS are made for low volume playing, you can practice anytime without disturbing your family or neighbors. These practice cymbals are made from the original HCS brass alloy and have a unique hole pattern engineered by MEINL for an authentic sound and feel under the stick.

PRACTICE HIHAT



14" P-HCS14H

PRACTICE CRASHES



16" P-HCS16C

18" P-HCS18C

PRACTICE RIDE



20" P-HCS20R

PRACTICE CYMBAL SET

14" HiHat
16" Crash
20" Ride
P-HCS141620



PRACTICE PADS

DOUBLE SIDED PADS

Two-sided practice pad with standard silicone and near-silent, muscle building "Marshmallow" foam.

- MDSP6GY** 6" Gray
- MDSP12GY** 12" Gray

Two-sided silicone and Marshmallow pad

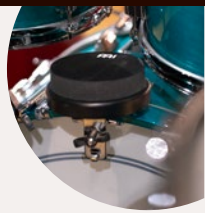
Solid modern composite base



BASSDRUM MOUNTED PAD

4" Marshmallow Practice Pad with padded mount attaches to your bassdrum hoop.

- MBDMP4BK** 4" Black



4" Marshmallow pad
Padded mount for bass drum hoops
Silent warm-ups at your kit
Add/remove quickly



Flip over for your preferred feel and rebound
All-in-one unit for different practice needs

MARSHMALLOW PADS

Practice quietly and build muscle at any hour. The Meinl Marshmallow Pads have a special formulated, super thick foam surface that provides rebound with ultra-low volume. Drop the decibels while practicing without losing a bouncy feel. The solid composite base is padded on the underside so you can play the pad on any surface. Equipped with an 8 mm threaded insert to mount on a cymbal stand.

- | | | |
|---------------------------|---------------------------|-----------------------------|
| MMP4BK 4" Black | MMP6BK 6" Black | MMP12BK 12" Black |
| MMP4OR 4" Orange | MMP6OR 6" Orange | MMP12OR 12" Orange |
| MMP4SF 4" Sea Foam | MMP6SF 6" Sea Foam | MMP12SF 12" Sea Foam |

13/16" (20 mm) Super Thick Marshmallow Foam

3/4" (19 mm) Solid Base

3/16" (5 mm) Non-slip Bottom

Medium rebound from special "Marshmallow" foam surface

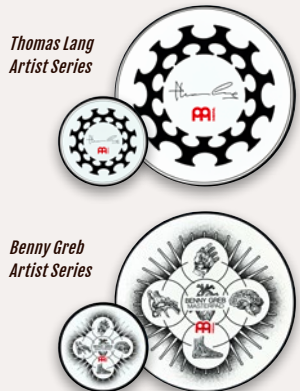


Fits any snare stand
8 mm thread to mount on a stand

PRACTICE PADS

Develop speed, power and precision with the Meinl rapid-rebound practice pads. Carry a 6" pocket-sized pad anywhere, or put a 12" on your snare stand to work on your chops.

- | | | | |
|--|--|----------------------------|----------------------------|
| Thomas Lang Artist Series Practice Pads | Benny Greb Artist Series Masterpads | Meinl Practice Pads | Black Practice Pads |
| MPP-6-TL 6" | MPP-6-BG 6" | MPP-6 6" | MPP-6-BK 6" |
| MPP-12-TL 12" | MPP-12-BG 12" | MPP-12 12" | MPP-12-BK 12" |



SPLIT TONE PAD

Anika Nilles Artist Series

The Split Tone Pad consists of three distinct surfaces that offer different feels and volume levels, along with a reduced rebound section on the back. It is designed to train more than a simple rudiment. With the Split Tone Pad, you can creatively mold your own systematic approach to advance your consistency, accuracy in unisons, hand independence and muscle strength. The power of this pad is in its ability to train your ears and mind for a better understanding of rhythms.

MSTP 12"



Three playing surfaces
Bag included

KNEE PAD MOUNT

Designed in cooperation with Benny Greb.

The Knee Pad Mount allows you to strap most any threaded (8 mm) practice pad around your knee.

MKPM



Adjustable strap to secure in place

4" KNEE PAD

With its 4" compact size and light weight, this pad sits on your knee and can be secured with the adjustable strap.

- MKPP-4** Meinl
- MKPP4BK** Black



Adjustable strap to secure in place

4" MARSHMALLOW KNEE PAD

Practice silently virtually anywhere with no setup.

- MKMP4BK** Black



4" Marshmallow pad
Adjustable leg strap
Silent practice virtually anywhere
No setup

CYMBAL BAGS

WAXED CANVAS CYMBAL BAGS

These bags are designed for an understated and timeless style while being as practical as ever for any type of traveling drummer.

- MWC22BK** up to 22" Classic Black
- MWC22GR** up to 22" Forest Green
- MWC22KH** up to 22" Vintage Khaki



Heavyweight, ultra-durable waxed canvas fabric
Hihat compartment fits 15" cymbals and has one canvas divider
Main compartment fits 22" cymbals and has two canvas dividers
Reinforced leatherette underside and handle
Adjustable backpack straps and exterior accessory pocket



Classic Black



Forest Green



Vintage Khaki

VINTAGE HYDE CYMBAL BAGS

The Meinl Vintage Hyde Cymbal Bags have all the tough usability of a touring bag with a classic good look.

- MVHC22BK** up to 22" Black
- MVHC22DB** up to 22" Dark Brown
- MVHC22LB** up to 22" Light Brown



High-quality leatherette exterior
Main compartment fits 22" cymbals and has two canvas dividers
Hihat compartment fits 15" cymbals and has one canvas divider
Adjustable backpack straps
Exterior accessory pocket



Black



Dark Brown



Light Brown

CLASSIC WOVEN CYMBAL BAGS

The Classic Woven Bags have all the tough usability of a touring bag with timeless good looks. They are designed for functionality and style for any type of traveling drummer.

- MCCB22BK** up to 22" Black
- MCCB22GY** up to 22" Heather Gray
- MCCB22MO** up to 22" Mocha Tweed



Heavyweight, ultra-durable 600D woven polyester with suede leather accents
Main compartment fits 22" cymbals and has three dividers
Hihat compartment fits 15" cymbals and has one sewn-in divider
Adjustable backpack straps and reinforced padded handle
Large rear pocket to stow straps and accessories
EVA lined bottom to protect cymbal edges



Black



Heather Gray



Mocha Tweed

CYMBAL BAGS & CASES

PRO CYMBAL BACKPACKS

Padded organization in a mobile-forward backpack bag. Protect your cymbals, and reduce trips loading in/out of the venue.

- MCB22-BP** up to 22" Black
- MCB22CB** up to 22" Coyote Brown

Waist strap, sternum strap, extra padding



Black

- Backpack straps, shoulder strap*
- 22" main compartment*
- 15" hi-hat compartment*
- Cymbal dividers*



Coyote Brown

PRO CYMBAL BAGS

These bags have an external 15" compartment, cymbal dividers and a shoulder strap.

- MCB22** up to 22"
- MCB24** up to 24"



CARBON RIPSTOP CYMBAL BAG

Ultra-durable materials make this cymbal bag ideal for travelling through packed city environments to get to the gig or studio. The all black "carbon" exterior finish is made with strong 600D woven polyester ripstop. Adjustable padded backpack straps with ABS ladder locks and chest buckle let you wear the bag comfortably on your back to keep your hands free.

- MCB22CR** up to 22"



GIG CYMBAL BAG

Ideal for casual gigs, this bag has an easy-grip handle and holds cymbals up to 22".

- MSTCB22**



PRO CYMBAL CASE

This 22" hard-shell case is designed for heavy-duty protection, with a through-case center bolt capable of securing approximately 9 cymbals.

- MCC22** up to 22" Black
- MCC22R** up to 22" Red

PRO CYMBAL CASE TROLLEY

A retractable handle and heavy-duty wheels let you pull your cymbals with ease instead of lifting and carrying them.

- MCC22-TR** up to 22" Black
- MCC22R-TR** up to 22" Red



CYMBAL DIVIDERS

These soft dividers protect your cymbals against metal-on-metal damage in any bag or case.

- MCD-14** 2pcs 14" pack
- MCD-22** 2pcs 22" pack



STICK BAGS

WAXED CANVAS STICK BAGS

These bags are designed for an understated and timeless style while being as practical as ever for any type of traveling drummer.

- MWSBK** Classic Black
- MWSGR** Forest Green
- MWSKH** Vintage Khaki



Classic Black

Vintage Khaki

Forest Green

VINTAGE HYDE STICK BAGS

The Meinl Vintage Hyde Stick Bags have all the tough usability of a touring bag with a classic good look.

- MVHSBK** Black
- MVHSDB** Dark Brown
- MVHSLB** Light Brown



Black

Dark Brown

Light Brown

CLASSIC WOVEN STICK BAGS

The Classic Woven Bags have all the tough usability of a touring bag with timeless good looks. They are designed for functionality and style for any type of traveling drummer.

- MCSBBK** Black
- MCSBGY** Heather Gray
- MCSBMO** Mocha Tweed



Black

Heather Gray

Mocha Tweed

PRO STICK BAGS

Easily transitions from a rugged travel companion to access-forward storage on the gig. A commonsense pocket layout sorts sticks, brushes, mallets, multi-rods, accessories, and tools.

- MSB-1** Black
- MSBCR** Carbon Ripstop
- MSBCB** Coyote Brown



Black

Carbon Ripstop

Coyote Brown

- Nine internal pockets*
- Exterior pocket*
- Shoulder strap*
- Floor tom hooks*

MATCHED PAIR STICK BAG

A special pocket layout lets you quickly grab matched pairs of drumsticks from the bag every time you need one.

- MPSB**



STICK SLING BAG

The Meinl Stick Sling Bag is a wider version of our best-selling Pro Stick Bags. Inside are eleven pockets of varying size for any kind of stick, mallet, rod, brush or accessory. An oversized exterior pouch is big enough to fit bulkier items. Carry the loaded bag with its sturdy, reinforced handles or use the adjustable body strap to sling the bag across your body and keep your hands free.

- MSSB**



COMPACT STICK BAG

This slim sized bag has two sections for four pairs of sticks or mallets making it perfect for saving space.

- MCSB**



HOLDER, DRUMMER GLOVES & DRUM RUGS

DRUMSTICK HOLDER

So you don't miss a beat when you drop a stick, clamp this holder to your hi-hat or cymbal stand so you can quickly grab a stick.

MC-DSH Black



DRUMMER GLOVES

Want a better grip so you avoid stick slip and blisters? Available with or without fingers.

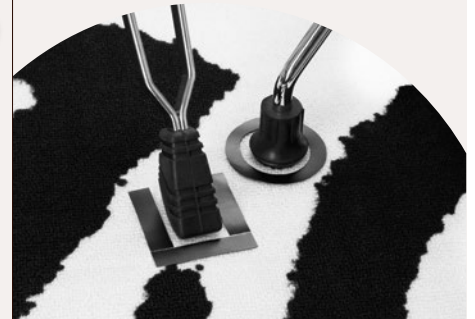
MDG M, L, XL
MDGFL Fingerless M, L, XL



QUICK-SET MARKERS

Mark the position of your drums and hardware with the hook 'n' loop strips and circles.

MQSM 60 strips for hardware
 10 circles for drums



DRUM RUGS

Meinl Drum Rugs are designed specifically for drummers and percussionists with tightly woven fabric that spurs and stands can dig into for a super strong grip. A non-slip rubber bottom keeps the rug from creeping as you play on any surface and is durable to prevent spurs from puncturing through.

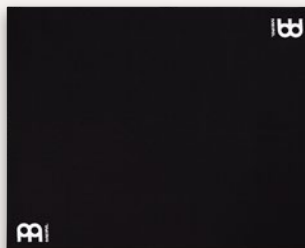
Drum Rugs Large: 200 cm (6.5') x 200 cm (6.5')
 Wide enough to accommodate a drum throne as well so all hardware legs are on the same surface. Ideal for covering the entire drum riser.

MDRL-OR Oriental
MDRL-BK Black
MDRL Black White



Drum Rugs Standard: 160 cm (5.25') x 200 cm (6.5')
 Standard size to fit almost all common drum setups. Bag included.

MDR-OR Oriental
MDR-BK Black
MDR-MA Mandala – Designed by Aric Improta
MDR Black White



Drum Rugs Small: 140 cm (4.6') x 160 cm (5.25')
 Compact design is great for smaller setups. Bag included.

MDRS-OR Oriental
MDRS-BK Black
MDRS Black White



E-Drum Rug: 150 cm (4.9') x 160 cm (5.25')
 With the E-Drum Rug it's possible to manage cables, plus ensure the rest of your kit and its pedals are securely set in place and will not move. Quick-Set Markers and bag included.

MDR-E E-Drum Rug



DRUM GEAR & SOUND DESIGN

DRUM HONEY & DRUM HONEY FISHBOWL

Meinl Drum Honey instantly transforms your drum sound into a warm and sweet tone with practically no effort. They can be removed from any surface as needed. Vital for session drummers and studio engineers as well as being used in houses of worship and venues where sound control is needed. Drum Honey is washable by using a drop of dish soap and water. Let them air dry (no direct sunlight), and their stickiness will recover. The Meinl Drum Honey is non-toxic.

The Meinl Drum Honey Fishbowl is filled with 16 packs of Drum Honey for easy, impulse purchase.

- MDH** Drum Honey
- VE16-MDH** Drum Honey Fishbowl



They also work great on cymbals

DRUM HONEY ASSORTMENT

The assortment includes 12 dampening gel pads:
 6 x small 1,52 cm (0.6")
 4 x medium 2,54 cm (1")
 2 x large 3,55 cm (1.4")

- MDHA** Drum Honey Assortment



DRUM HONEY SLAB

The Meinl Drum Honey Slab instantly transforms your drum sounds into a meaty, warm, and sweet tone with practically no effort. This extra-thick and large dampening gel pad has a rectangular shape measuring 3.54" (9 cm) long x 2.36" (6 cm) wide x 0.31" (0,8 cm) thick. It can be placed on any drumhead type and removed easily as needed.

- MDHS** Drum Honey Slab



Comes with storage box

MAGNETIC SUSTAIN CONTROL

Designed in cooperation with Benny Greb.

Easily control the sustain and dampen the tone of your cymbals, cowbell, or other instrument with the Meinl Magnetic Sustain Control. Simply adjust the effect by positioning the magnets on your instrument.

- MCT**
- 2pcs 16 x 4 mm - light damping
- 2pcs 16 x 9 mm - heavy damping
- With storage barrel



Simply place the magnets on the cymbal

SIZZLE RIVETS

Add some character to the sustain of your cymbal with these sizzling brass plated rivets. Simply insert the rivet into the hole, and bend the bottom end out.

- CY-RIVET-BR** Set of three brass plated steel rivets



These are designed to work for cymbals with existing holes. Drilling new holes in your cymbal will void the warranty.

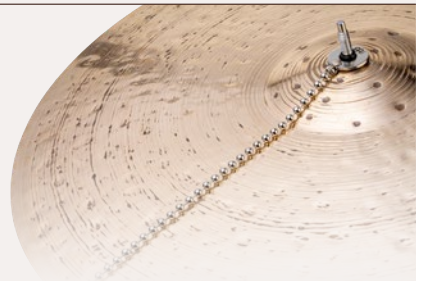
CYMBAL BACON

The Meinl Cymbal Bacon adds a sizzle sound to any ride, crash, or effect cymbal in your set up by simply placing the chain on top of your cymbal. Easy to use on any cymbal stand and does not scratch or harm cymbal finishes. Available as a standard and heavy version.

- BACON** Standard version
- HBAC** Heavy version

Standard version

Heavy version



BYZANCE DRUM KEYS

The Byzance Drum Keys are eye-catching and functional. One side shows off the Byzance logo, while the other features the Meinl logo. Easy to tune with, the wing design is wide enough to make quick adjustments or head changes. A key ring hole allows you to attach the Byzance Drum key to your everyday set of keys. Available in antique bronze- and antique tin plated finish.

- MBKB** Antique bronze plated finish
- MBKT** Antique tin plated finish



Antique bronze plated finish



Antique tin plated finish

Back

KINETIC DRUM KEYS

At 75 grams, the Meinl Kinetic Drum Keys are one of the heaviest on the market. The added mass allows them to stay in position while enabling quick drumhead changes. Available in antique bronze, black nickel or chrome.

- SB500** Chrome
- SB501** Black nickel
- SB510** Antique bronze



Chrome



Black nickel



Antique bronze

NEW

NEW

MIKE JOHNSTON ARTIST SERIES GROOVE BELL

The Meinl Mike Johnston Artist Series Groove Bell was developed to offer drummers a cowbell that sits perfectly in the mix of a band while providing the percussive spark required in their grooves. Included are two magnets (one small & one large, based on Benny Greb's Magnetic Sustain Control idea) that dampen the sustain and muffle unwanted ring. The Groove Bell is high-lighted with a vintage steel finish.

MJ-GB



ANIKA NILLES ARTIST SERIES BEAT BELL

Comes with the Meinl Rim Clamp to attach to your snare. No stand required. This 5" steel cowbell can easily go with any style.

AN-BB



Designed with Anika Nilles

No stand required

Attaches directly to your snare

Includes Rim Clamp, U-shaped rod, Drum Honey, Drum Key

Material: Special steel alloy

GRAVITY BELL

This heavy bell sits directly on a snare or floor tom, dampening the head for a compressed and controlled drum sound. Plus, you can play on the bell with your sticks for different metal effects.

MGB



Heavyweight metal bell

Weight: 2.75 lbs (1.250 gr)

*Size: 5.1" (13 cm) x
3.9" (10 cm) x
1.8" (4,5 cm)*

Material: Special steel alloy

AJUCH BELLS

Meinl Ajuch Bells are handcrafted from cast brass bells and are available in three sizes for various pitch and tone. Each rope is hand tied and features a solid brass hook to secure the bells onto any hihat, cymbal, drum, or stand. Canvas bag included.

MABS Small
MABM Medium
MABL Large



BACKBEAT PRO TAMBOURINE

Featuring a brass ring made from Meinl Cymbal alloy with brass jingles attached, any drummer can add a tambourine effect to a snare backbeat or floor tom rhythm.

BBP14 14" in diameter



BENNY GREB ARTIST SERIES TAMBO STEP

A hands-free tambourine you play with your foot. The small beater is designed for a short sustain with strong jingle response for precise rhythms. Works with any bass drum pedal (pedal not included).

BG-TS



Designed with Benny Greb

Hands-free tambourine

*Great for multi-instrumentalists,
guitarists, and cajon players*

Sand blasted solid brass jingles

*Comes with mount,
Z-shaped rod, and beater*

BENNY GREB ARTIST SERIES HIHAT TAMBOURINE

True to his signature cymbals, the Benny Greb Artist Series Hihat Tambourine features sand blasted jingles that have a dry, vintage sound and unique matte appearance. The eight pairs of brass jingles produce a mellow, yet edged 'ching' effect that will lift any groove.

HTHHBG



CHING RINGS

Incorporate a 'ching' into your grooves by placing one of the three different Meinl Ching Rings directly on your cymbals!

CRING 5 pairs of stainless steel jingles, steel ring
DCRING 5 pairs of stainless zinc jingles, steel ring
SCRING 6 pairs of stainless steel jingles, foam ring



SUPER FLEX HIHAT TAMBOURINE

The highly responsive tambourine is made with a flexible and lightweight Mylar frame that contours to the profile of your cymbal. This focuses all energy on the jingles, fully activating them to give you outstanding hihat foot tambourine response without a heavy, lagging feel. Equipped with ten pairs of stainless steel jingles that deliver a bright sound with plenty of volume to shine through the mix. Great for live or studio use.

SFHHT

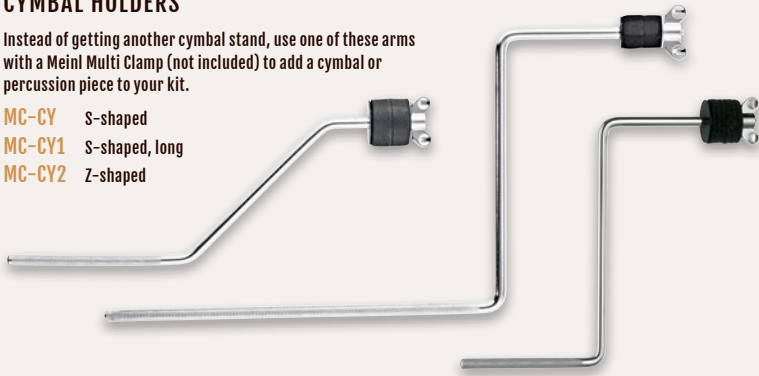


HARDWARE

CYMBAL HOLDERS

Instead of getting another cymbal stand, use one of these arms with a Meinl Multi Clamp (not included) to add a cymbal or percussion piece to your kit.

- MC-CY S-shaped
- MC-CY1 S-shaped, long
- MC-CY2 Z-shaped



CYMBAL STACKERS

Double up the cymbals on any one of your stands with a short or long stacker.

- MC-CYS 6 mm thread, long version
- MC-CYS8 8 mm thread, long version
- MC-CYS8-S 8 mm thread, short version



X-HAT CYMBAL STAND ADAPTER

Instantly modify any 8 mm threaded cymbal stand into a fixed X-Hat stand. The adapter simply screws on the cymbal stand allowing to add a pair of hi-hats or a cymbal stack whenever is most desired. Clutch is included.

MXHA



X-HAT AUXILIARY HIHAT ARM WITH CLAMP

Add a pair of hi-hats or a cymbal stack to your drum set up with this multi-adjustable attachment.

MXH



Tension adjustment



CYMBAL ATTACHMENT

Add another cymbal to your set-up with this multi-clamp and boom-arm combo.

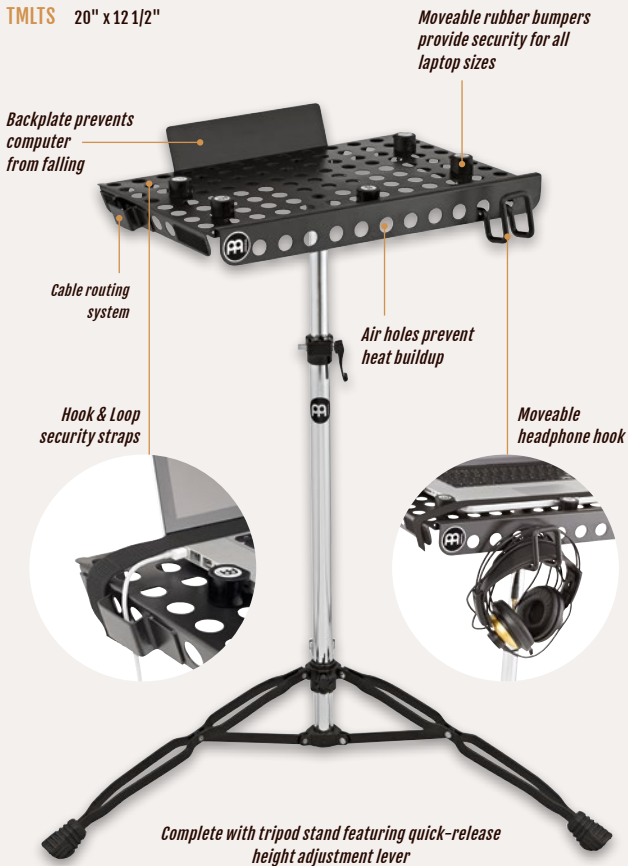
MCA



LAPTOP TABLE STAND

The Meinl Laptop Table Stand features everything you need to secure and optimize your computer while performing on-stage.

TMLTS 20" x 12 1/2"



LIGHT LAPTOP TABLE STAND

Light, travel-friendly laptop stand with foldable legs. Holds laptops up to 16". Height adjustable.

MLLTS 14.5" x 10 3/4"



HARDWARE & MUTES

CAJON DRUM SET STANDS

The Meinl Cajon Drum Set Stands allow you to build a cymbal set around your cajon while keeping your stage footprint low-key.

- CCS** Cajon Cymbal Stand
- CHS** Cajon Hihat Stand



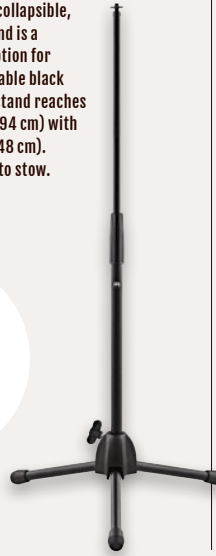
PRACTICE PAD STAND

Ultra-compact and easily collapsible, the Meinl Practice Pad Stand is a lightweight, convenient option for practicing. Made from durable black powder coated steel, this stand reaches a maximum height of 37" (94 cm) with a minimum height of 19" (48 cm). Foldable legs make it easy to stow.

MPPS



A threaded 8 mm connector allows you to mount most pads.



MARSHMALLOW PAD & STAND

4" Marshmallow practice pad and lightweight, travel-friendly stand combo.

MMP4BK-MPPS



4" Marshmallow pad with lightweight stand

Near-silent foam builds muscle

Easily collapsible and height adjustable



DYNAMIC PEDAL PAD

Designed in cooperation with Benny Greb.

Advanced Bass Drum Pedal Practice Pad for single or double kick that responds at any dynamic level and helps you develop control, independence and feel in addition to speed.

MDPP

Usable with any bass drum pedal



DYNAMIC PEDAL PAD ATTACHMENT

The Meinl Dynamic Pedal Pad Attachment is a pad surface replacement for the Meinl Dynamic Pedal Pad, which was designed in cooperation with Benny Greb. This pad attachment works for single and double kick practice.

MDPPA



CYMBAL MUTES & DRUM MUTES

Made to fit over your cymbals or lay directly on your drumheads to dampen the vibrations as well as reduce attack and volume. You can practice for hours without disturbing close neighbors.

- MCM-14** 14" Hihat (2pcs)
- MCM-16** 16" Crash
- MCM-18** 18" Crash
- MCM-20** 20" Ride

Available Sets:

- MCM-141620** 14", 16", 20"
- MCM-14161820** 14", 16", 18", 20"



Mute your cymbals for quiet practicing



- MDM-10** 10"
- MDM-12** 12"
- MDM-13** 13"
- MDM-14** 14"
- MDM-16** 16"
- MDM-18** 18"

Available Sets:

- MDM-10121414** 10", 12", 14", 14"
- MDM-10121416** 10", 12", 14", 16"
- MDM-12131416** 12", 13", 14", 16"

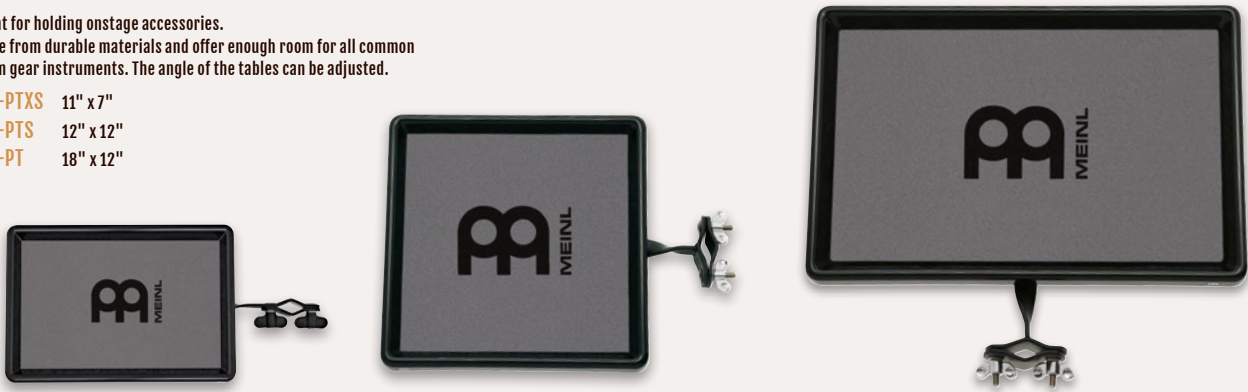


HARDWARE

PERCUSSION TABLES

Great for holding onstage accessories.
Made from durable materials and offer enough room for all common drum gear instruments. The angle of the tables can be adjusted.

- MC-PTXS 11" x 7"
- MC-PTS 12" x 12"
- MC-PT 18" x 12"



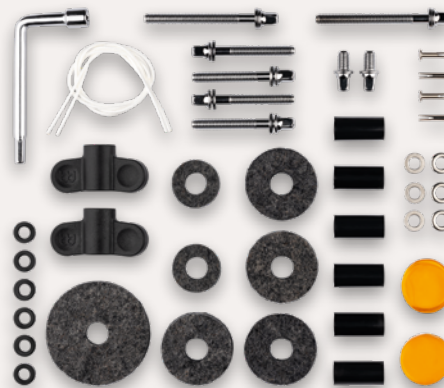
DRUM TECH KIT

The Meinl Drum Tech Kit provides security beyond just a drum key. We carefully assembled a kit that will cover you for emergencies, routine maintenance, restoration projects or replacing lost parts. This bundle is perfect for any level of drummer needing to ensure their instrument is always in tip-top shape.

MDTK



Comes with storage box



- Includes:**
- 1x L-Shaped Drum Key
 - 4x Drum Honey Gel Pads
 - 6x Plastic Cymbal Sleeves
 - 4x Steel Cymbal Rivets
 - 4x Cymbal Felts
 - 2x Hi-hat Clutch Felts
 - 1x Hi-hat Base Felt
 - 2x 8 mm Wing Nuts
 - 6x Metal Washers
 - 6x Plastic Washers
 - 2x Nylon Snare Cords
 - 2x Short Tension Rods
 - 4x Medium Tension Rods
 - 2x Long Tension Rods

CLEAN & PROTECT

CYMBAL CLEANER

Ideal for cleaning Brilliant and Traditional finish cymbals.

MCCL



CYMBAL POLISH

Cleans and polishes Brilliant finish cymbals.

MCP



CYMBAL PROTECTANT

Seals and protects cymbal surface.

MCPR



CYMBAL CARE KITS

Keep your cymbals looking like new using these cymbal care kits.

MCCK-MCCL
Cymbal Cleaner & Cymbal Protectant

MCCK-MCP
Cymbal Polish & Cymbal Protectant

Both kits include **FREE** Meinl Cymbal Gloves.



CYMBAL GLOVES

Made from 100% cotton, use these gloves to prevent fingerprints or oils on the surface of your cymbals.

MHS-WH





DID YOU KNOW MEINL ALSO OFFERS
HIGH-QUALITY DRUMSTICKS, BRUSHES,
MULTI-RODS AND MORE?

Visit meinlstickandbrush.com
for more info.



All features are subject to change without notice.
Not responsible for typographic errors. No part of this
catalog may be reprinted, reproduced, or included
in any online service in any form in whole or in part,
without the prior permission of Meinl.

© 2026 Roland Meinl Musikinstrumente GmbH & Co. KG

CONCEPT & DESIGN

ercas GmbH & Co. KG
[www.ercasdieagentur.de]

CONTENT & DIRECTION

Norbert Saemann, Alexander Puchta, Udo Heubeck

PHOTOGRAPHY

Sebastian Jäger, Christian Habermeier
[www.studio-waldeck.de]

Tobias Winklmann, Manuel Burdeus Mendoza,
Sebastian Angele, Norbert Saemann, Mario Schmitt,
Randy Edwards, Angela Michel, Alex Wohleber,
Marius Mischke, Tobias Merkle, Henrik Bergerbusch,
Bastian Kückenhoff, Sean Fujiwara, AFW Studios

LITHOGRAPHY

Sven Mihm [www.mihm-werbung.de]

GLOBAL HEADQUARTERS

Roland Meinl Musikinstrumente GmbH & Co. KG
Musik-Meinl-Straße 1
91468 Gutenstetten
Germany
info@meinlcymbals.com

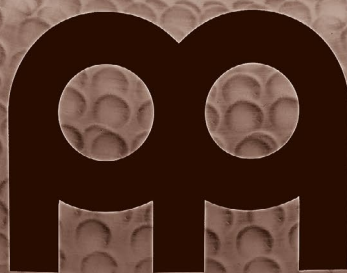
NORTH AMERICAN HEADQUARTERS

Meinl USA L.C.
3427 Ambrose Avenue
Nashville, TN 37207
USA
info@meinlusa.com

Printed in Germany M-CA101125




MADE IN GERMANY
ROLAND MEINL
280800744

 **MEINL**

CYM-CATALOG26



8 42960 11615 1